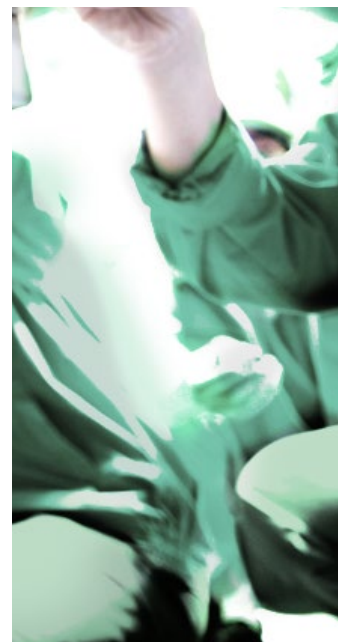
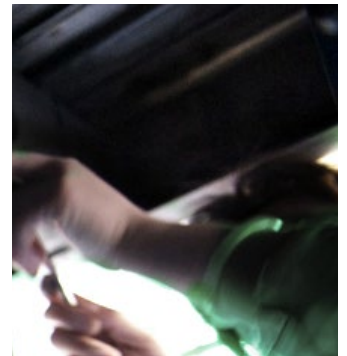


ELECTRICAL SAFETY SOLUTIONS /

AFTER-SALES SERVICES

RAIL VEHICLES / DC TRACTION SUBSTATIONS / INDUSTRY





AFTER-SALES SERVICES

At Sécheron, we have built our reputation on designing and manufacturing safety components and solutions. All our products are backed by services to help you get the most out of your equipment throughout its service life. We offer maintenance, training, troubleshooting and repair services through a global network of service points to bring you the fast, efficient support you need wherever you are around the globe.

Content

	Pages
SÉCHERON SAFETY PHILOSOPHY	
<hr/>	
Safety related products	3
Original spare parts concept	3
Design to low maintenance	3
A FULL RANGE OF AFTER-SALES SERVICES	
<hr/>	
Preventive maintenance and repair	4
E-learning & training	5
Retrofit & modernization project	5
ELECTRICAL SAFETY SOLUTIONS SCOPE OF SUPPLY	
<hr/>	
Rail Vehicles	6
DC traction substation	7

SÉCHERON SAFETY PHILOSOPHY

SAFETY RELATED PRODUCTS

Our components and equipment supply high power to rail vehicles and other industrial equipment and protect high voltage circuits from electrical faults. Because our solutions play a critical role in protecting people and property, regular preventive maintenance must be performed by specially-trained technicians and engineers using Sécheron's original spare parts. We have developed detailed and accurate operation and maintenance procedures, delivered with your equipment, for regular maintenance and parts replacement.

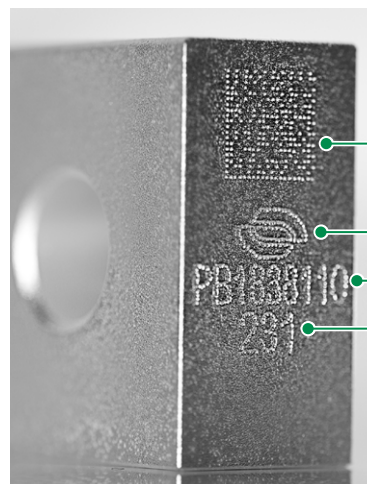
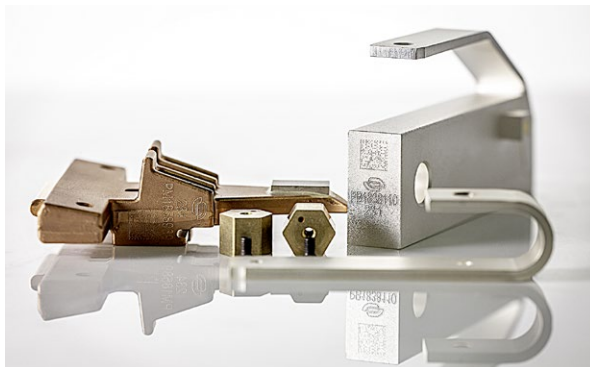


DC circuit breaker

ORIGINAL SPARE PARTS CONCEPT

In order to guarantee the reliability and the performance of Sécheron's safety devices, only Sécheron's original spare parts must be used through the complete product lifetime.

These original parts, manufactured and checked following rigorous processes, are now stamped with the Sécheron's logo and the traceability numbers (manufacturing order and serial number), either on the parts themselves or on their original packaging.



Sécheron's specific QR code

Sécheron's logo

Manufacturing order

Serial number



Contact Sécheron or one of our partners:

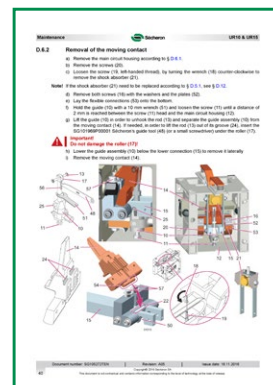


www.secheron.com/worldwide
for guaranteed original parts and maintenance services.

DESIGN TO LOW MAINTENANCE

During the development process, Sécheron pays a high attention to designing products and solutions that minimize maintenance requirements while offering easy access to wearing parts.

Our products and solutions undergo intensive factory testing to ensure superior reliability and uptime in service. They are released to the market only once our severe and rigorous testing procedures have been successfully completed. Our maintenance procedures, as described in our operation & maintenance manuals, guarantee the reliability and performances of the components during all their service life.



A FULL RANGE OF AFTER-SALES SERVICES

PREVENTIVE MAINTENANCE AND REPAIR

To guarantee the reliability and both electrical and human safety during all their life cycle, our equipment must be regularly maintained by technicians or engineers who have been specifically trained to perform such preventive maintenance.

/// PREVENTIVE MAINTENANCE BY SÉCHERON

Our preventive maintenance services can be delivered by our local experts at a Sécheron site or at your facility. Sécheron's local experts for maintenance have been trained on the maintenance and safety procedures applicable to our devices, and they are certified by Sécheron for this activity.

To apply for Sécheron's maintenance service go to:



<https://support.secheron.com>

open a new ticket and select the topic "4 - On-Site Intervention Request".



Sécheron Italia



Sécheron India

/// PREVENTIVE MAINTENANCE BY OPERATORS

Your maintenance staff can also perform preventive maintenance on our equipment. In this case, we recommend your personnel are trained by Sécheron so that they can perform preventive maintenance correctly and safely.

Together with its equipment, Sécheron provides very detailed and precise Operation & Maintenance manuals that guide the operators and maintenance teams on the maintenance intervals as well as on the procedures to replace worn or damaged parts. Making sure such manuals have been delivered with your equipment is the first action we take.

For this service, check the paragraph: **'E-LEARNING & TRAINING'**.

/// TROUBLESHOOTING & REPAIR

If, for any reason, your Sécheron product is damaged or does not operate as intended, you can send it to Sécheron for troubleshooting and repair as outlined



Sécheron Hasler UK

in the RMA (Return Material Authorization) procedure. To help us provide you with the fastest and most efficient service possible, please follow all instructions in the RMA carefully and be sure to provide all of the necessary documentation.

Once your product is received by Sécheron, either in Geneva or at Sécheron's service center covering your geographical area, we will perform the necessary troubleshooting according to your description of the problem.

To send back damaged material to Sécheron go to:



<https://support.secheron.com>

open a new ticket and select the topic

"3 - (RMA) Return Merchandize Authorization".

E-LEARNING & TRAINING

Sécheron has built a strong reputation not only for reliable, high-performance products, but also for value-added services including training. Whether you integrate, operate, or maintain Sécheron solutions, we have a training program for you.

Our training programs are regularly updated with new information to help you increase your solution's uptime, extend its service life, improve customer service and operational safety, and lower Total

Cost of Ownership (TCO). Training certificates are delivered upon successful completion of a course (i.e., demonstrated mastery of best practices validated by Sécheron).

To apply for a training go to :



<https://support.secheron.com>

open a new ticket and select the topic "5 - Request For Training".

/// LEVEL 1 E-LEARNING TRAINING

Our Level 1 e-learning training is designed for anytime, anyplace access to content, eliminating travel time and missed work. Learn in a safe, quiet, clean environment away from the noise and pressures of the workplace. E-learning courses are available for most of our products, with comprehensive video tutorials on product maintenance.



/// LEVEL 2 CLASSROOM TRAINING COURSES

Level 2 classroom training courses are generally scheduled once a year on specific products like our DC circuit breakers, AC circuit breakers, contactors, disconnectors, and more. These courses are held at our headquarters in Geneva or at one of our authorized service centres. We can also offer training at your premises on request. These practical courses are generally delivered with the associated e-learning content.



RETROFIT & MODERNIZATION PROJECT

For old vehicles and installations requiring an overhauling of electric equipment, Sécheron offers comprehensive solutions to replace existing components and sub-systems. Our proposal can include customization of equipment & solutions listed in our scope of supply in order to make an easy integration in your vehicle.

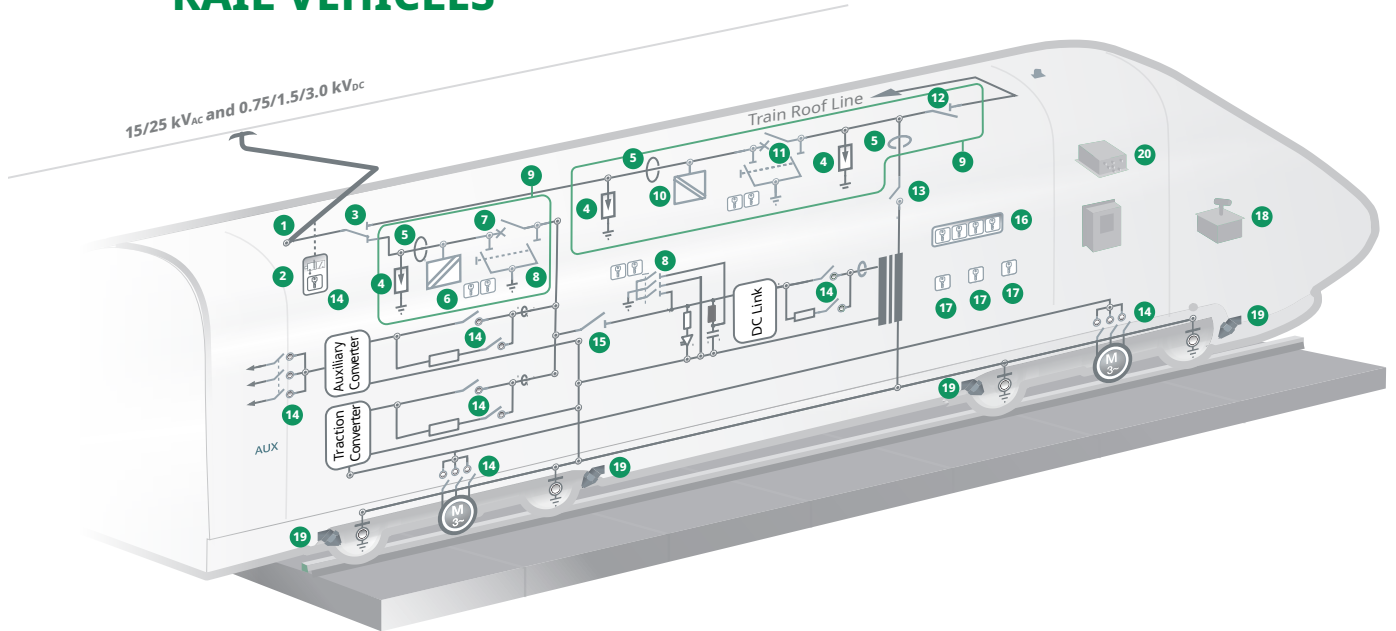
Feel free to contact Sécheron or one of our partners (www.secheron.com/worldwide) so that together we can evaluate your needs and better shape the solution that fits the best to your requirement and environment.



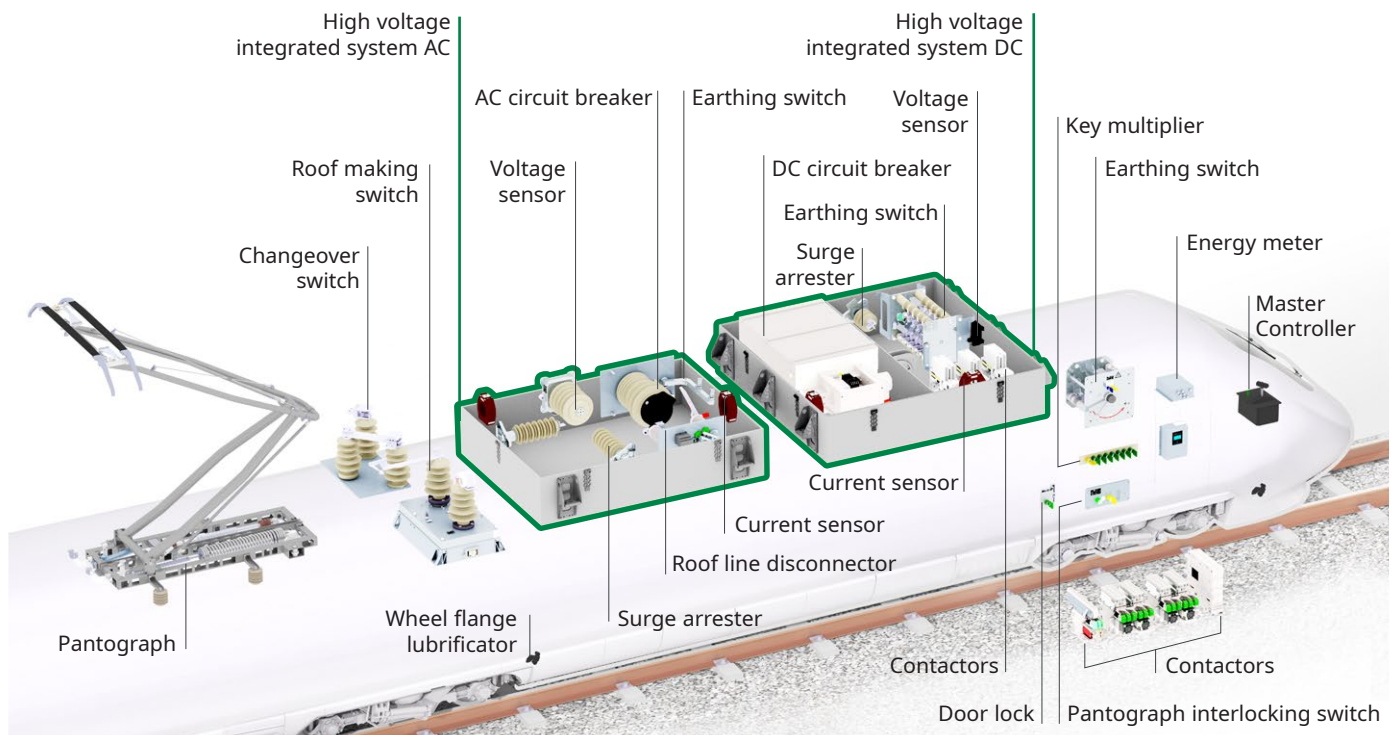
Sécheron's SPL pantograph integrated on an existing tram.

ELECTRICAL SAFETY SOLUTIONS SCOPE OF SUPPLY

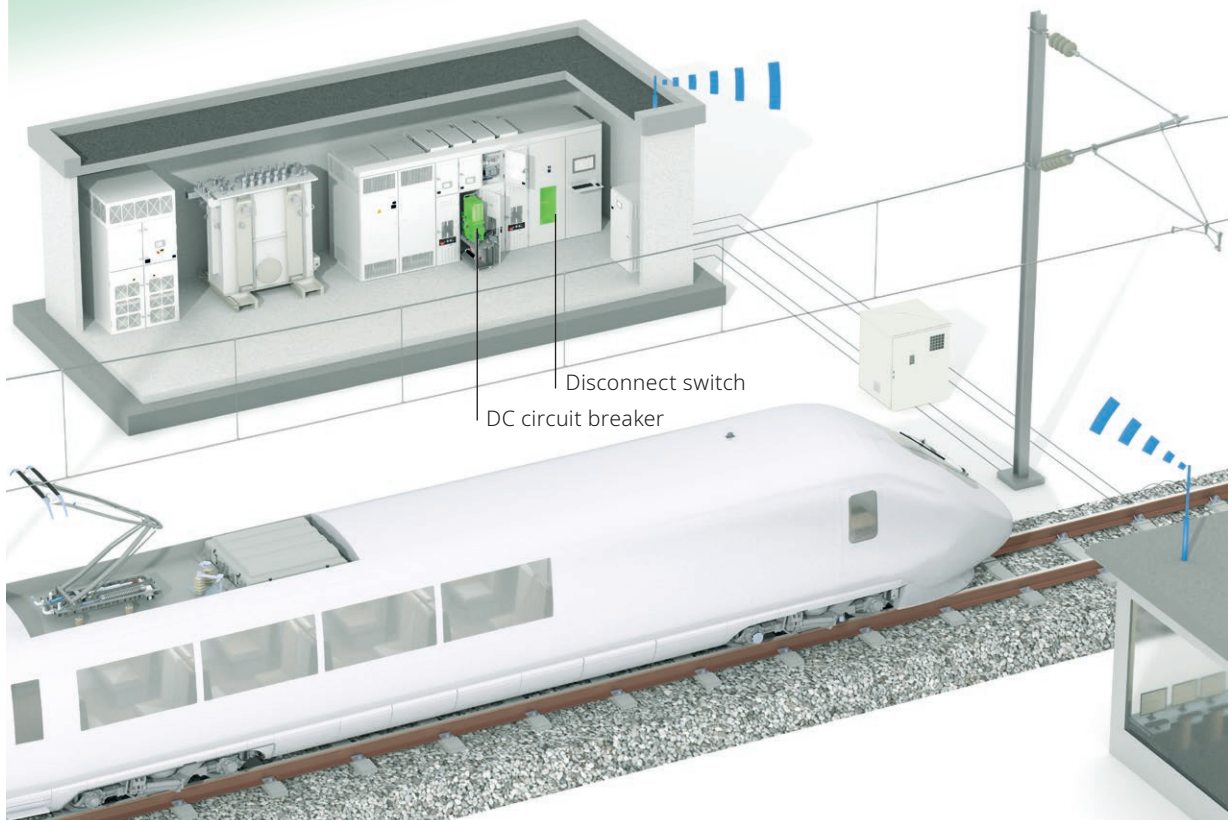
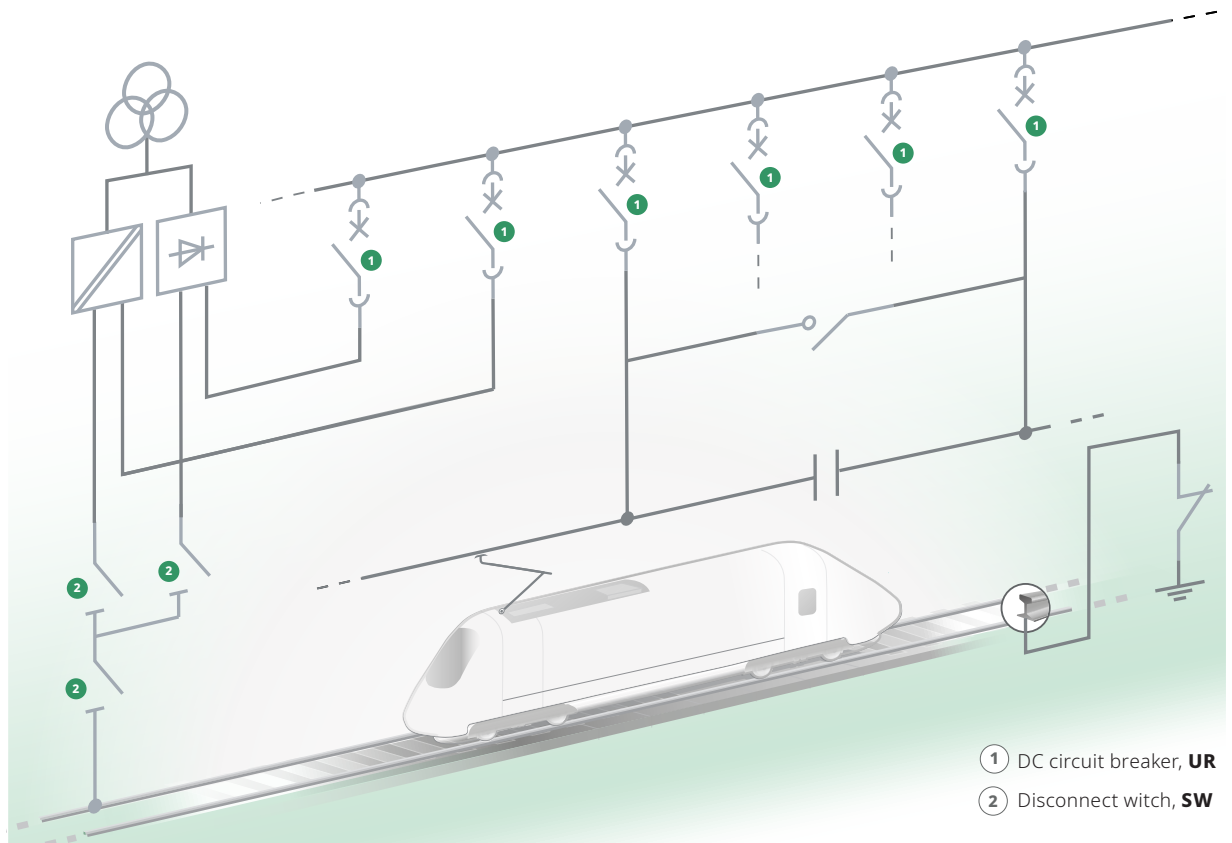
RAIL VEHICLES



- | | | |
|--|---|--|
| ① Pantograph, SPL | ⑧ Earthing switch, BTE...04 | ⑮ Disconnecter, XMS |
| ② Pantograph interlocking switch, BSV | ⑨ High voltage integrated system, MODBOX® | ⑯ Key multiplier, KM |
| ③ Changeover switch, RS | ⑩ Voltage sensor AC, TMS | ⑰ Door lock, DL |
| ④ Surge arrester | ⑪ AC circuit breaker & earthing switch, MACS | ⑱ Master controller, MMC |
| ⑤ Current sensor | ⑫ Roof line disconnecter, RS | ⑲ Wheel flange lubricator, GB-G |
| ⑥ Voltage sensor DC | ⑬ Roof making switch, RS-M | ⑳ Energy meter, REM |
| ⑦ DC circuit breaker, UR | ⑭ Contactors & modules, BMS, SEC, HS, PCM | |



DC TRACTION SUBSTATION



Sécheron's own service points

EUROPE

Germany, Austria, Netherlands

Sécheron Hasler GmbH
Max-Holder-Strasse 41
60437 Frankfurt am Main
Germany
Phone: +49 695 06086130
Fax: +49 863 33160228
service.germany@secheron.com

Great Britain, Ireland

Sécheron Hasler UK Ltd
Unit D6 Brookside Business Park
Greengate, Chadderton
Greater Manchester – M24 1GS
United Kingdom
Phone: +44 161 655 6610
service.uk@secheron.com

Italy, Malta

Sécheron Italia S.r.l.
Linate Business Park
Via Rivoltana 35
20096 Pioltello – MI – Italy
Phone: +39 029 216 2590
service.italia@secheron.com

Russia, CIS

Sécheron Russia Ltd
Ozerkovskaya 50/1-504
115054 Moscow – Russian Federation
Phone/Fax: +7 495 959 22 75
service.russia@secheron.com

Slovakia, Czech Republic, Poland

Sécheron Hasler CZ, spol. s r.o.
Podnikatelská 556
190 11 Praha - Czech Republic
Phone: +420 271 088 283
Fax: +420 271 088 286
service.czech@secheron.cz

Spain, Portugal, Andorra

Sécheron Hasler Ibérica, S.L.
Calle Hierro, 28
Polígono Industrial Camponuevo
28863 Cobeña, Madrid – Spain
Phone: +34 916 207 958
service.spain@secheron.com

EUROPE

Switzerland and rest of the world

Sécheron SA (Switzerland), Head Office
Rue du Pré-Bouvier 25
1242 Satigny - Geneva – Switzerland
Phone: +41 22 739 41 11
Fax: +41 22 739 48 11
service.ess@secheron.com

ASIA

China, Hong Kong, Taiwan

Sécheron (China) Co. Ltd
Section B, 1F Building No. 1
111 Shennan Road
Xinzhuang Industry Park
Shanghai 201108 – P.R. China
Phone: +86 21 6442 2900
Fax: +86 21 6442 2910
service.china@secheron.com

India, Bangladesh, Nepal, Pakistan, Sri Lanka

Sécheron Hasler (India) Pvt. Ltd
17-C, Udyog Vihar, Phase-5,
Gurgaon, Haryana, India - 122016
Phone: +91 124 41 41 714
Fax: +91 124 41 41 713
service.india@secheron.com

Japan

Sécheron Office Japan
Suzuki building 103-104
3-2-17, Chuo, Chuo-ku, Sagamihara-city
252-0239, Kanagawa - Japan
Phone: +81 70 4417 3501
service.japan@secheron.com

AMERICAS

Brazil

Sécheron Hasler Brazil
Rua João Anes, 90
05060-020 / Alto da Lapa
São Paulo - SP – Brazil
Phone: +55 11 3714 6026
service.brazil@secheron.com

ASIA

South Korea

SEMS International Co Ltd
209. Yeoksam Venturitel
642-1, Yeoksam-Dong,
Gangnam-Gu Seoul, Korea Secheron
Phone: +82-2-2192-3773
service.secheron@sems.kr

Turkey

DeSA Representation & Consultancy & Engineering Ltd.
Hafta Sokak No 23/3
06700 G.O.P. Cankaya
Ankara - Turkey
Phone: +90 312 439 8 380
service.secheron@desa-trade.com

AUSTRALIA

Australia, New Zealand

Imtram Pty Ltd
37 Bond Street
Ringwood, VIC 3134 – Australia
Phone: +61 3 9879 5200
imtram@imtram.com

AMERICAS

South America Spanish-speaking

TyD Electrica srl
Mendoza 5220 1P
(1431CIP) CABA R. Argentina
Phone: +54 11 4587-2007
service.secheron@tydelectrica.com.ar

United States, Canada, Puerto Rico

ARM CAMCO LLC
667 Industrial Park Road
Ebensburg, PA 15931 - USA
Service.secheron@armcamco.net

AFRICA

Subequatorial Africa

ADS Engineering cc
13-15 Rembrandt Street
Petervale, Bryanston, 2151. ZA – South Africa
Phone: +27 11 803 05 70
ads@global.co.za

Sécheron's sales points

www.secheron.com/worldwide

This document is not contractual and contains information corresponding to the level of technology at the date of printing. Sécheron reserves the right to modify and/or improve the product, whose characteristics are described in these documents, as required by new technology at any time. It is the purchaser's responsibility to inform himself, no matter what the circumstances, of the product's maintenance conditions and requirements. Sécheron reserves all rights, especially those arising from our "General Delivery Conditions".

Copyright© 2020 Sécheron SA