



Wayside panels



GENERAL INFORMATION

Sécheron can provide a complete range of wayside cubicles in metallic or polyester execution. Cubicles are designed to integrate disconnecting switches, load break switches, contactors or DC high speed circuit breakers.

METALLIC TYPE

Standard sizes (W x D x H): *

- 1200 x 1200 x 1500 mm – One door
- 1200 x 600 x 900 mm – One door
- 800 x 800 x 1500 mm – One door
- 750 x 700 x 1500 mm – One door
- 1000 x 500 x 1500 mm – Two doors
- 1000 x 500 x 1500 mm – Three doors
- 830 x 700 x 1335 mm – One door (VLD)

Colour: According to customer's request.

Protection degree: IP54, IP55.

Mechanical impact protection: IK9, IK10.

Material: Welded frame + Steel external plates with PC window.

Treatment: RAL - Priming powder + UV-light and solvent-resistant coating system. Anti-graffiti upon request.



Certificate: Steel Cubicle

POLYESTER TYPE (GRP)

Standard sizes (W x D x H): *

- 1200 x 1200 x 1500 mm – One door
- 800 x 1000 x 1500 mm – One door
- 800 x 800 x 1500 mm – One door
- 800 x 600 x 1500 mm – One door
- 1400 x 850 x 1700 mm – Two doors
- 880 x 750 x 1335 mm – One door (VLD)

Colour: According to customer's request.

Protection degree: IP54, IP55.

Mechanical impact protection: IK9, IK10.

Material: Fiberglass – 4 mm. Halogen Free Fire Retardant resin. Self-extinguishing. PC window.

Treatment: RAL - Fire Retardant Spray Gelcoat + UV stabilizer. Anti-graffiti upon request.



Certificate: Polyester Cubicle



* Customized execution upon request.

Steel base stand upon request.

OPTIONAL

Seismic and climatic tests.

APPLICATIONS

/// LOAD BREAK SWITCH



/// DISCONNECTOR



/// VLD FOR OUTDOOR APPLICATION




**FOR SPECIFIC APPLICATION:
DOUBLE WALL SOLUTION**

Reliable solution to reach efficient thermal insulation, which is preventing condensation.

THERMAL MANAGEMENT

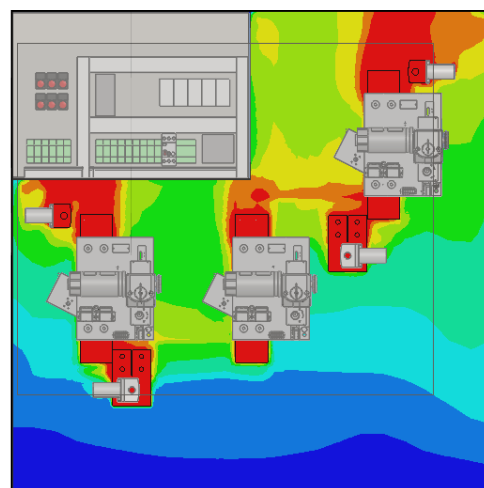
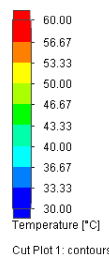
/// THE TECHNOLOGY OF COOLING

System solutions combine the power of different products and optimise the efficiency, environmental performance and safety by consistently providing the required refrigerant in the required temperature, or by, even after switching off the unit, preventing condensation in the control cabinet.

Thermal studies applicable for customized solutions.

/// TWO BASIC COOLING METHODS

- Natural convection: Use of louvers or grills with filters.
- Forced convection: Use of filterfans.



SG630927BEN_B02-09.18



Sécheron SA

Rue du Pré-Bouvier 25
1242 Satigny - Geneva
CH-Switzerland

www.secheron.com

Tel: +41 (0)22 739 41 11
Fax: +41 (0)22 739 48 11
substations@secheron.com

This document is not contractual and contains information corresponding to the level of technology at the date of printing. Sécheron reserves the right to modify and/or improve the product, whose characteristics are described in these documents, as required by new technology at any time. It is the purchaser's responsibility to inform himself, no matter what the circumstances, of the product's maintenance conditions and requirements. Sécheron reserves all rights, especially those arising from our "General Delivery Conditions".

Copyright© 2018 Sécheron SA